



8:30am – 10:00am

Granting agencies and participatory science in Canada

*Panel Organizer: Fanny Magini
Fonds de recherche du Québec*

SSHRC  CRSH 

ADVANCING KNOWLEDGE FOR CANADA'S FUTURE

ENABLING EXCELLENCE, BUILDING PARTNERSHIPS, CONNECTING RESEARCH TO CANADIANS

TED HEWITT, PRESIDENT

NOVEMBER 8, 2018

Our role

Federal agency mandated to promote and support postsecondary-based research and training in the social sciences and humanities

Through grants, fellowships and scholarships SSHRC:

- **Trains** the next generation of talented, creative thinkers and doers
- **Builds** knowledge and understanding about people, cultures and societies
- **Drives** the innovations that address the challenges of today and tomorrow





CONNECT SOCIAL SCIENCES AND HUMANITIES RESEARCH WITH CANADIANS

Collaborate with the public, private, not-for-profit and academic sectors to address key challenge areas for Canada;

Increase opportunities for students to engage with non-academic sectors as part of their research training;

Work with students, researchers, research institutions and other stakeholders to better articulate the value and contribution of research; and

Make SSHRC's own administrative data more easily accessible to the public.

EXAMPLES OF COMMUNITY ENGAGEMENT

PARTNERSHIP ENGAGE GRANTS

Grants that respond quickly to the short-term research needs, challenges and opportunities of non-academic organizations

COMMUNITY AND COLLEGE SOCIAL INNOVATION FUND

Helps colleges to increase their capacity to work with communities in areas like education, integration of vulnerable populations and community development

PEER REVIEW PROCESSES

Reviewers may be from Canada or abroad; they may come from postsecondary institutions; or they may come from organizations across the public, private and not-for-profit sectors.

INDIGENOUS RESEARCH

SSHRC is committed to supporting and promoting social sciences and humanities research by and with Indigenous Peoples.



Truth and Reconciliation Commission (TRC) Report

To redress the legacy of residential schools and advance the process of Canadian reconciliation, the TRC Report made 94 calls to action.

65: “We call upon the federal government, through the Social Sciences and Humanities Research Council, and in collaboration with Aboriginal peoples, post-secondary institutions and educators, and the National Centre for Truth and Reconciliation and its partner institutions, to establish a national research program with multi-year funding to advance understanding of reconciliation.”



Truth and
Reconciliation
Commission of Canada



National Centre for
Truth and Reconciliation

UNIVERSITY OF MANITOBA

CONNECTING RESEARCH WITH CANADIANS



Syrian Refugee Arrival, Resettlement and Integration Initiative

(Partnership Development Grants 2016)

SSHRC and Immigration, Refugees and Citizenship Canada funded 27 short-term research projects addressing issues related to the resettlement process.



Sport Participation Research Initiative

(Insight/Talent, 2005-current)

Sport Canada and SSHRC joint initiative to study quality sport participation.



SSHRC-CIHR joint initiative: Healthy and Productive Work

(Partnership Development Grants 2015)

Examines intersection between health and social sciences in maintaining a healthy, inclusive, and productive workforce.

THANK YOU!



Social Sciences and Humanities
Research Council of Canada

Conseil de recherches en
sciences humaines du Canada

Canada

PLENARY SESSION

Granting agencies and participatory science in Canada

THURSDAY NOVEMBER 8 • 8:30 AM – 10:00 AM



MODERATOR

Véronique Morin
Science Journalist



SPEAKER

Dr. Ted Hewitt
President,
Social Sciences and
Humanities Research
Council



SPEAKER

Marc Fortin
Vice-President,
Research Partnerships,
NSERC



SPEAKER

Serge Marchand
Directeur scientifique,
Fonds de recherche du
Québec - Santé



SPEAKER

Louise Poissant
Directrice scientifique,
Fonds de recherche du
Québec – Société et
culture



SPEAKER

Dr. Michael J. Strong
President,
Canadian Institutes of
Health Research



Participatory Science



Ottawa, november 7th 2018

Serge Marchand, PhD
Scientific Director

**Fonds de recherche
Santé**

Québec  
 

Chief Scientist of Québec Rémi Quirion



July 1, 2011
Bill 130

To advise the Québec government on
research and science development

FRQNT
Maryse Lassonde

FRQS
Serge Marchand

FRQSC
Louise Poissant

Rémi Quirion
Interim



To promote and provide financial support for research
and dissemination of scientific knowledge, and to create
partnerships in each of their respective fields

**Natural and
Mathematical
Sciences and
Engineering**

Health Sciences

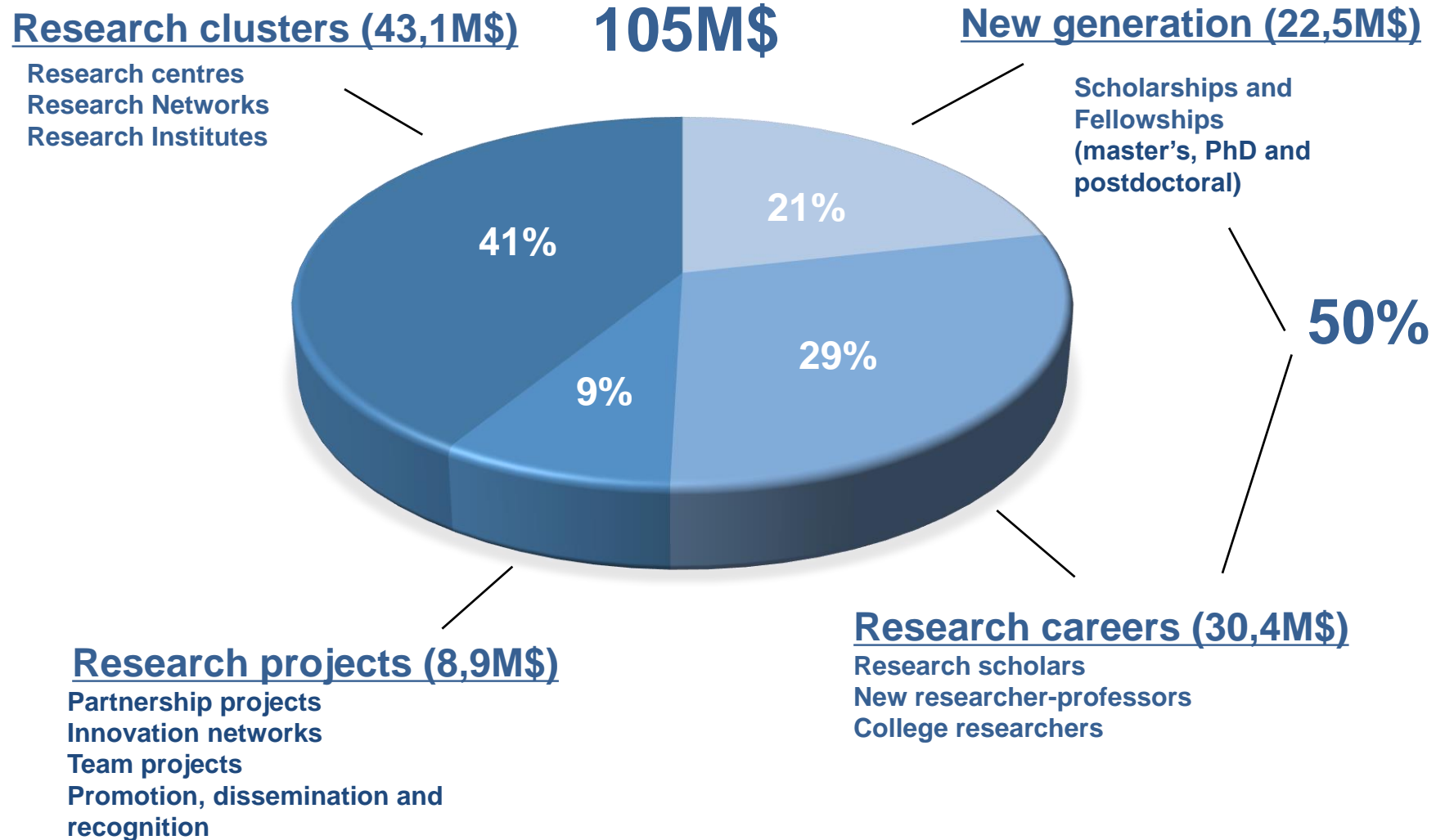
**Social and
Human Sciences,
Education, Arts
and Letters**

**Administration
3 funds**

**Ethical and legal
affairs**

**Communication
and knowledge
mobilization**

Funding provided by FRQS (2018-2019)



Participatory Science

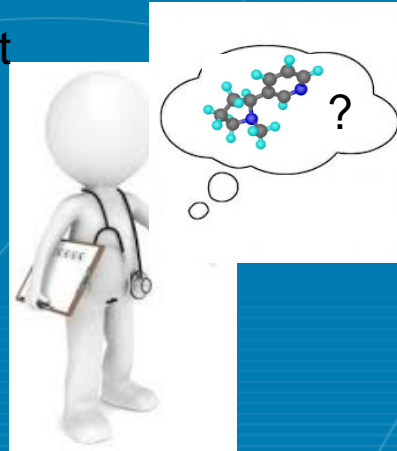


ACADIA
LEARNING
for
PARTICIPATORY
SCIENCE

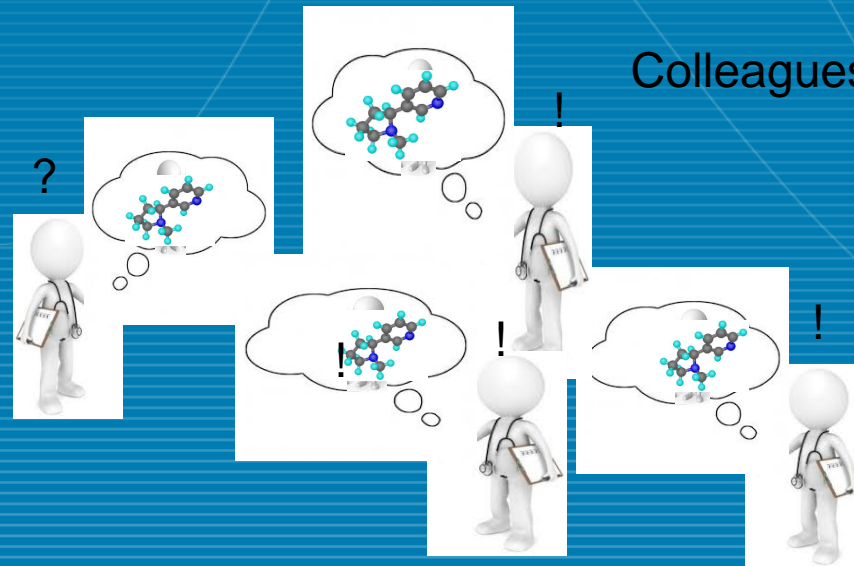


Conventional approach

Scientist



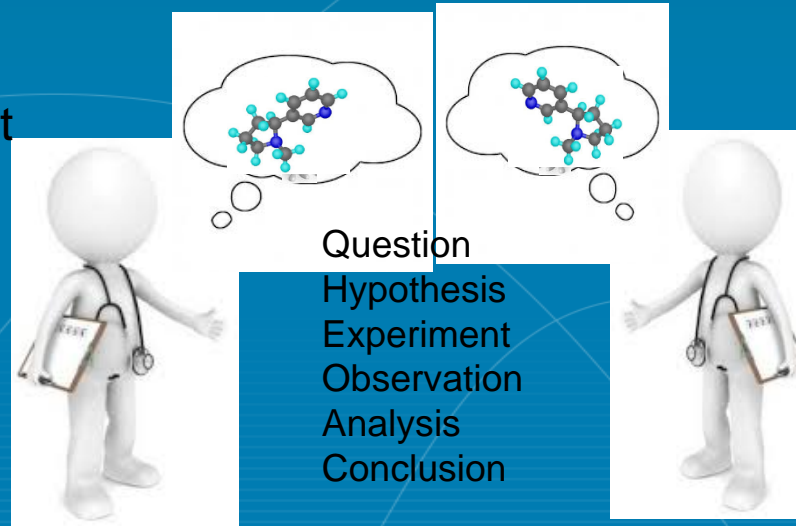
Colleagues



Scientific Collaboration

Scientist

Scientist



Scientific meeting



Publish in a high impact journal and everyone is happy !

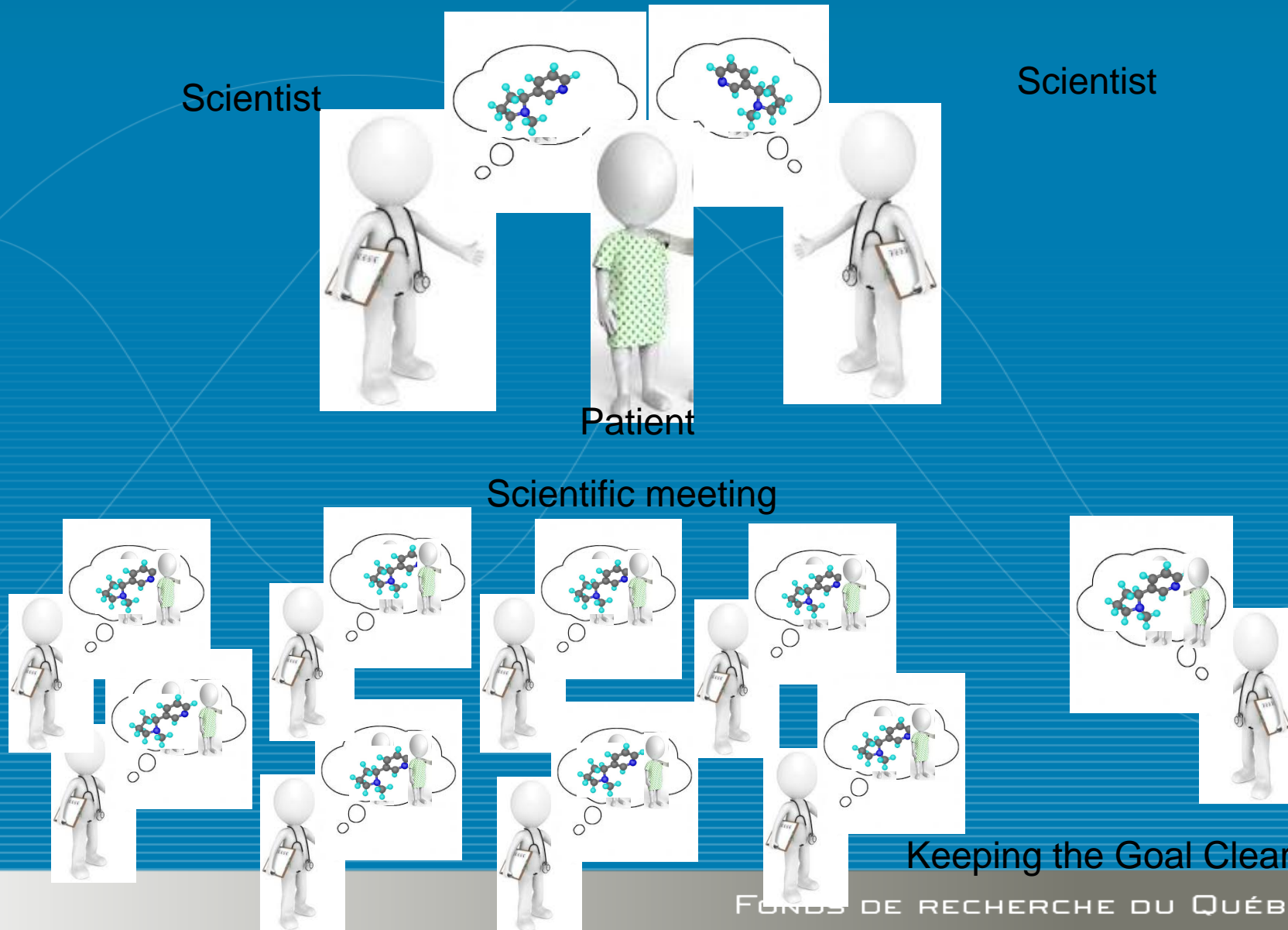


Sharing the results
with experts

Patient-Oriented Research



Patient Oriented Research



Strategy for Patient-Oriented Research

SPOR

Putting Patients First

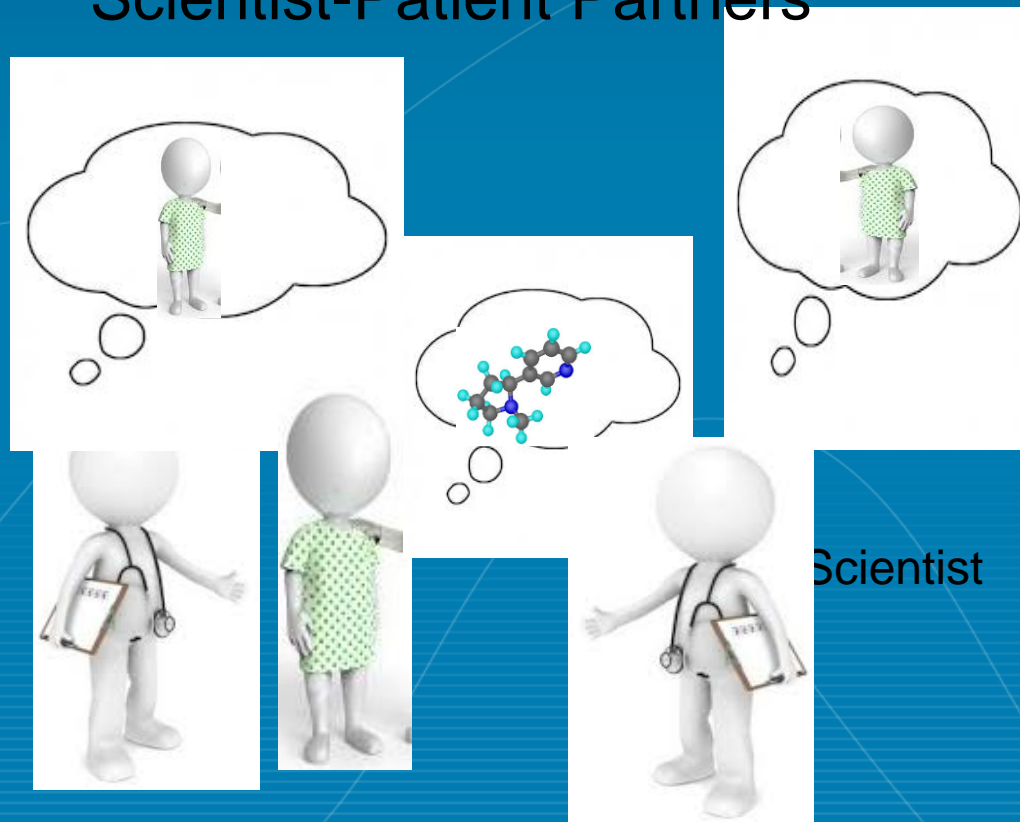


« Canada's Strategy for Patient-Oriented Research (SPOR) endorses the **active partnership** of patients, researchers... »

Scientist-Patient Partners

Scientist

Scientist



Patient-expert (partner)

Scientist-Patient Partners

Scientists



Question
Hypothesis
Experiment
Observation
Analysis
Conclusion

Also: grants review



Patient-expert (partner)

Project team

Strategy for Patient-Oriented Research

SPOR

Putting Patients First

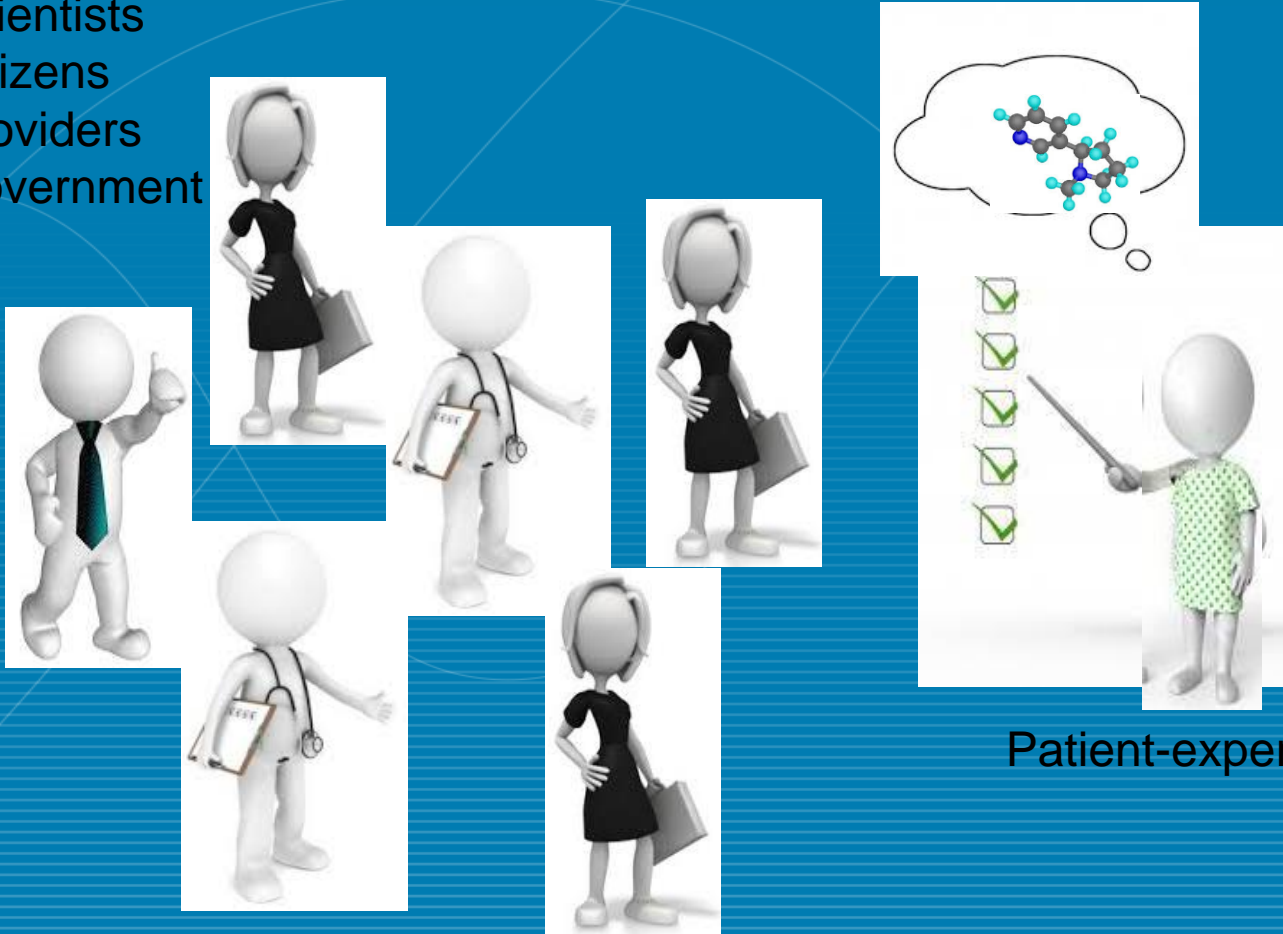


« Canada's Strategy for Patient-Oriented Research (SPOR) endorses the **active partnership** of patients, researchers, **health professionals and decision-makers in research...** »

Participatory Science

Linking Science and Society

Scientists
Citizens
Providers
Government
...



Patient-expert (partner)

Conclusion

- Citizen implication is possible and desirable
- But, it imply a change of paradigm !

Advantages:

- Outcomes
- Responding to needs
- ...

Challenges:

- New way of working
- Acceptance
- Time...

*nos
recherches
changent
le monde*

10th Canadian Science Policy Conference

Louise Poissant

FRQSC

8 novembre 2018

Ottawa

Fonds de recherche
Société et culture

Québec 



FRQ-SC Programs including citizen participation

- STRATEGIC NETWORKS
- RESEARCH TEAM PROGRAM – PARTNERSHIP TEAM
- CONCERTED ACTIONS
- INTERSECTORIAL PROGRAM: AUDACE
- IU-CAU : RESEARCH INFRASTRUCTURES OF INSTITUTES AND UNIVERSITY AFFILIATED CENTERS IN THE SOCIAL SECTOR

Programs for students

Entrepreneurship and Creativity

- Scholarship for **Internship** in a practice environment
- **Mentoring Adopte**: Association between the FRQ and Adopte Inc., to build bridges between young researchers (the adoptees) and well known personalities (the adopters)
- **OSEntreprendre** : Large network of partners facilitating business creation. Creation of services, events or products.

ADOPTÉ INC.



Role of the citizen in the research process

- Research needs are often defined by the partner who in this case is considered an expert
- Co-design of the problem
- Co-construction of the approach and of the methodology
- Member of an evaluation team



The paradigm shift came from citizens

Thanks to natives who complained that:

For years there has been researches done about us but we have never been involved in these researches

Thanks to the HIV patients who initiated and enriched the patient oriented research



Research Funds must adapt to

- Paradigmatic shift
- New epistemological approaches
- New forms of knowledge
- Breakthrough innovations
- Social innovation
- Intersectorial approaches

So coming...soon

- Revision of the CV providing more space and recognition for participative research
- Revision of the status of partner
- Adaptation of indicators for the assessment
- Sensitization of evaluation committees to the specificities of these forms of research
- And extend of the duration of some grants



but

We will not change everything. We have a complex research ecosystem that works well. But we also want to foster the development of these new forms of research.

« We should stop trying to apply old attribution models to the innovative ways we now generate data » Gretchen Kiser. Nature, Sept 27th

*Notre
recherche
change
le monde*

merci

Louise Poissant

Directrice scientifique

Louise.poissant@frq.gouv.qc.ca



@FRQSC

Fonds de recherche
Société et culture

Québec 